



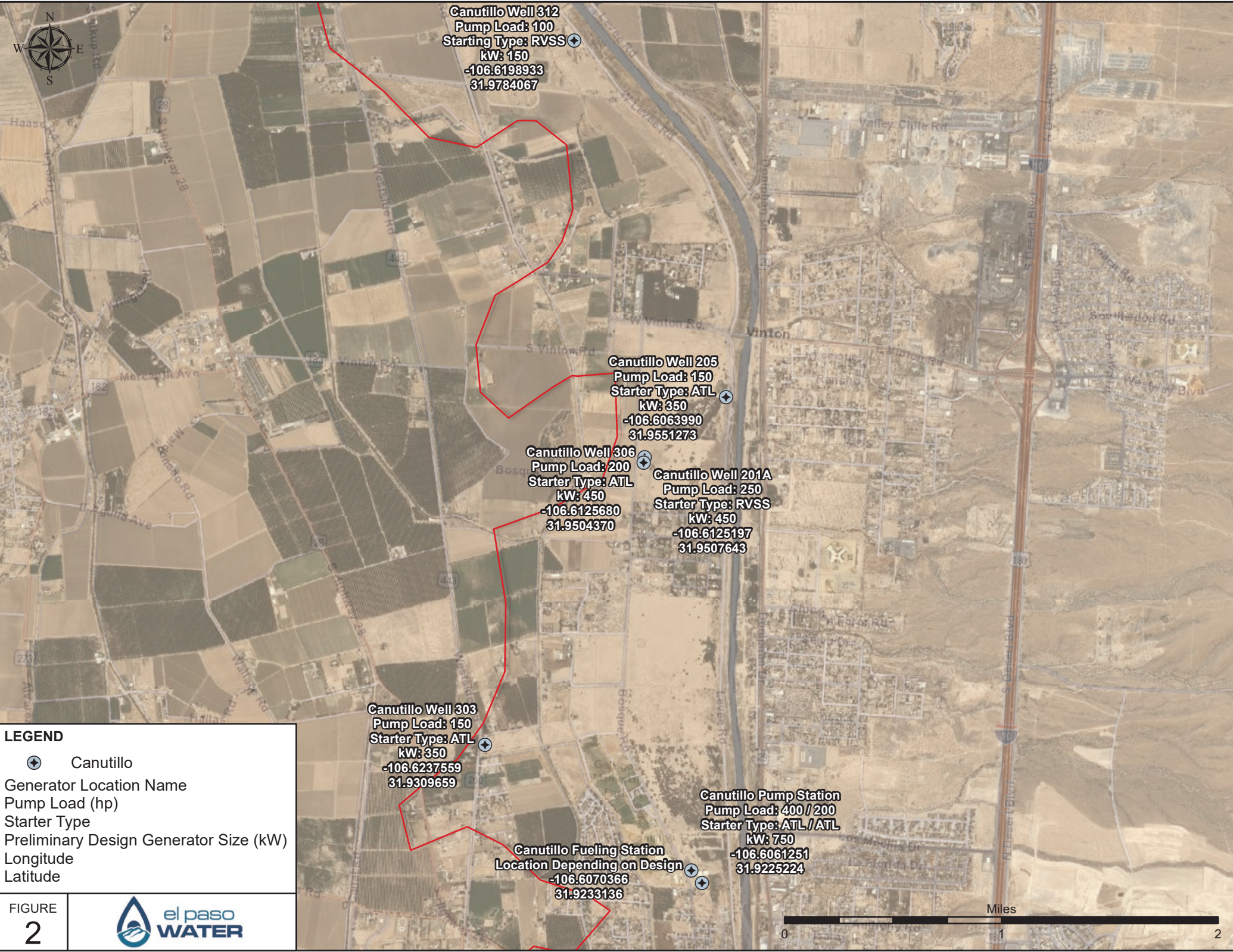
LEGEND

- US_MEX_Border
- Generator Location**
- Canutillo
- West; Central; Airport
- Northeast
- East Side

FIGURE 1



Jonathan Rogers WTP



Canutillo Well 312
 Pump Load: 100
 Starter Type: RVSS
 kW: 150
 -106.6198933
 31.9784067

Canutillo Well 205
 Pump Load: 150
 Starter Type: ATL
 kW: 350
 -106.6063990
 31.9551273

Canutillo Well 306
 Pump Load: 200
 Starter Type: ATL
 kW: 450
 -106.6125680
 31.9504370

Canutillo Well 201A
 Pump Load: 250
 Starter Type: RVSS
 kW: 450
 -106.6125197
 31.9507643

Canutillo Well 303
 Pump Load: 150
 Starter Type: ATL
 kW: 350
 -106.6237559
 31.9309659

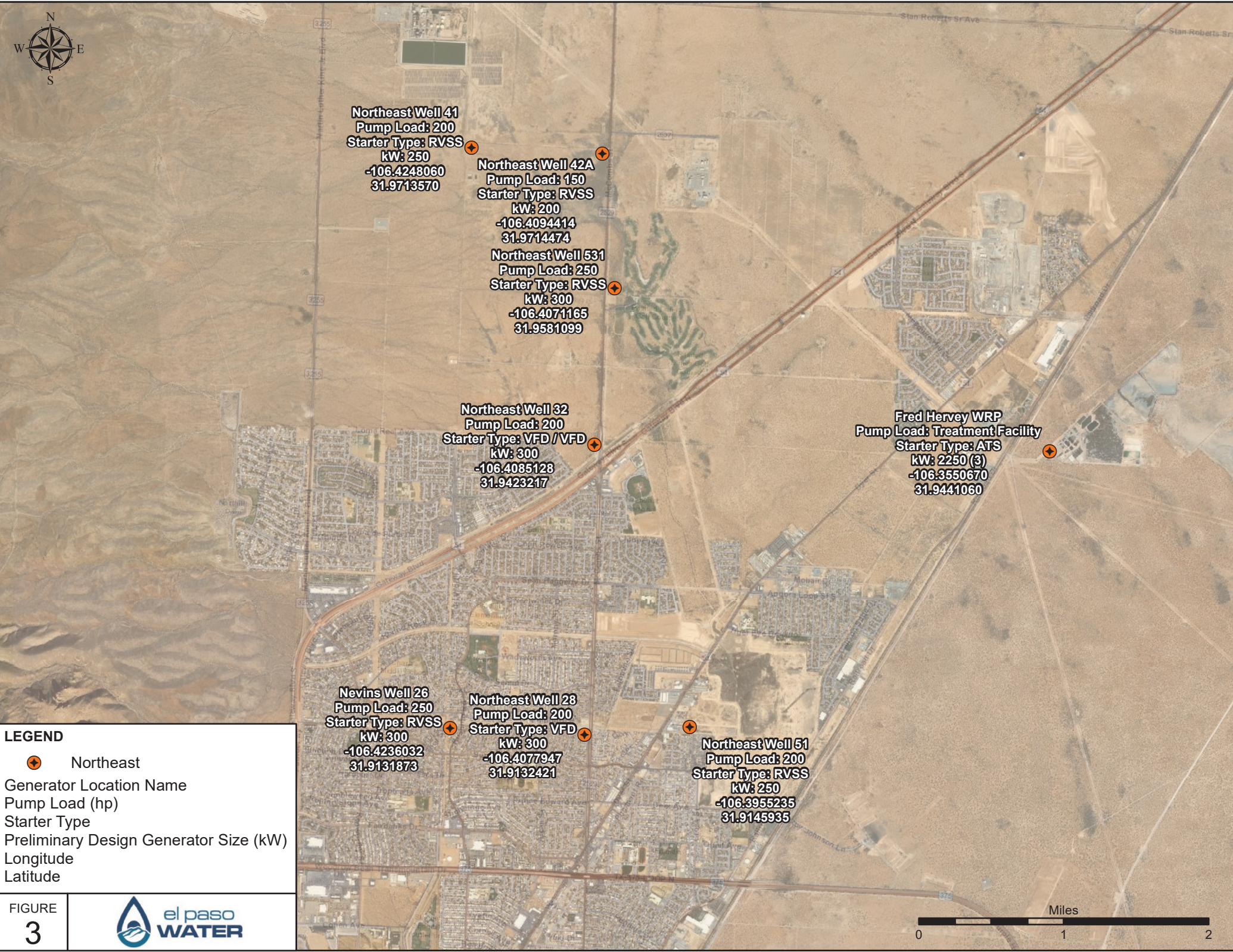
Canutillo Pump Station
 Pump Load: 400 / 200
 Starter Type: ATL / ATL
 kW: 750
 -106.6061251
 31.9225224

Canutillo Fueling Station
 Location Depending on Design
 -106.6070366
 31.9233136

LEGEND

- ⊕ Canutillo
- Generator Location Name
- Pump Load (hp)
- Starter Type
- Preliminary Design Generator Size (kW)
- Longitude
- Latitude





Northeast Well 41
 Pump Load: 200
 Starter Type: RVSS
 kW: 250
 -106.4248060
 31.9713570

Northeast Well 42A
 Pump Load: 150
 Starter Type: RVSS
 kW: 200
 -106.4094414
 31.9714474

Northeast Well 531
 Pump Load: 250
 Starter Type: RVSS
 kW: 300
 -106.4071165
 31.9581099

Northeast Well 32
 Pump Load: 200
 Starter Type: VFD / VFD
 kW: 300
 -106.4085128
 31.9423217

Fred Hervey WRP
 Pump Load: Treatment Facility
 Starter Type: ATS
 kW: 2250 (3)
 -106.3550670
 31.9441060

Nevins Well 26
 Pump Load: 250
 Starter Type: RVSS
 kW: 300
 -106.4236032
 31.9131873

Northeast Well 28
 Pump Load: 200
 Starter Type: VFD
 kW: 300
 -106.4077947
 31.9132421

Northeast Well 51
 Pump Load: 200
 Starter Type: RVSS
 kW: 250
 -106.3955235
 31.9145935

LEGEND

⊕ Northeast

Generator Location Name
 Pump Load (hp)
 Starter Type
 Preliminary Design Generator Size (kW)
 Longitude
 Latitude



